

LED DOWNLIGHT ROGAN

LED DOWNLIGHT ROGAN comes with a flexible structural design, with the availabilities of 2 versions; Fixed Type and Adjustable Type, enable customers to choose the lighting with their preference.

ROGAN is designed to spread out evenly and smoothly down the wall with high lumen output, creating the perfect glare-less lighting effect. It provides high efficiency optics and light pattern that is suitable in any commercial application.

SPECIFICATIONS

- Module Power : 3W, 6W, 12W, 20W & 35W
- Beam Angles : 15°·18°, 24° & 38°
- CCT : 2700K, 3000K, 4000K & 6500K
- CRI : 90
- IP rating : IP20
- Dimming : 0-10v / DALI (optional)

HIGHLIGHTS

- Easy Installation and maintenance
- LED Light Source: CREE / OSRAM / CITIZEN / PHILIPS
- Average rated lifespan of 50,000 hours
- Accessory of Honeycomb cover is optional
- Instant-On Light

CERTIFICATIONS

- CE
- RoHS

TECHNICAL SPECIFICATIONS

System Power	CCT	Beam Angles	Light Output				Power Factor	Dimension mm (DxH)	Cut out size mm	Version	Article Number
			lm	IP	CRI	Voltage					
3W	2700K / 3000K / 4000K / 6500K	18°/24°/38°	250	20	90	220-240V	>0.7	59 x 75	55	FIXED	HC-DL-DH3-NxCyBD
6W	2700K / 3000K / 4000K / 6500K	18°/24°/38°	500	20	90	220-240V	>0.9	59 x 75	55	FIXED	HC-DL-DH4-NxCyBD
6W	2700K / 3000K / 4000K / 6500K	18°/24°/38°	500	20	90	220-240V	>0.9	59 x 75	55	ADJUSTABLE	HC-DL-DH4-NxCyBE
12W	2700K / 3000K / 4000K / 6500K	15°/24°/38°	1000	20	90	220-240V	>0.9	85 x 110	75	FIXED	HC-DL-IN8-NxCyBD
12W	2700K / 3000K / 4000K / 6500K	15°/24°/38°	1000	20	90	220-240V	>0.9	85 x 110	75	ADJUSTABLE	HC-DL-IN8-NxCyBE
20W	2700K / 3000K / 4000K / 6500K	15°/24°/38°	1700	20	90	220-240V	>0.9	105 x 126	95	FIXED	HC-DL-TQ2-NxCyBD
20W	2700K / 3000K / 4000K / 6500K	15°/24°/38°	1700	20	90	220-240V	>0.9	105 x 126	95	ADJUSTABLE	HC-DL-TQ2-NxCyBE
35W	2700K / 3000K / 4000K / 6500K	15°/24°/38°	2920	20	90	220-240V	>0.9	132 x 156	120	FIXED	HC-DL-1UF-NxCyBD
35W	2700K / 3000K / 4000K / 6500K	15°/24°/38°	2920	20	90	220-240V	>0.9	132 x 156	120	ADJUSTABLE	HC-DL-1UF-NxCyBE

Option: x: Color

B= 2700K, C= 3000K, D= 4000K, F= 6500K

y: Beam angle

C=15°, f=18°, Q=24°, N=36°



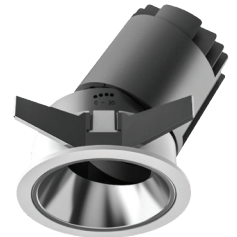
12W,20W,35W
Fixed Type



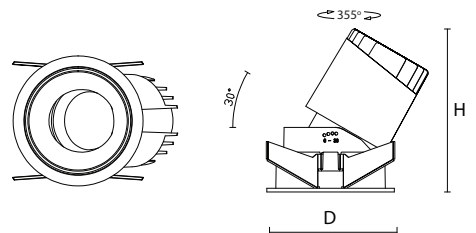
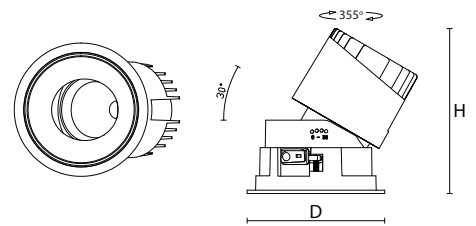
12W,20W,35W
Adjustable Type



3W,6W
Fixed Type



3W,6W
Adjustable Type



Tolerance: ±2.5mm